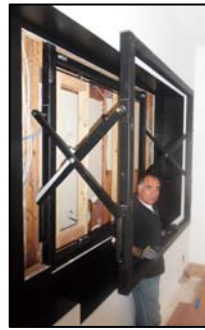




PRODUCT SPECIFICATION

ATLAS SERIES MEGAMOUNT™ SOLUTION

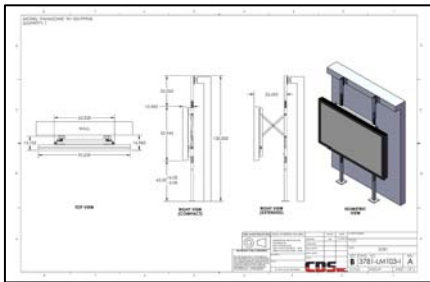


Actual 108" Extending Scissor MegaMount™

General:

The Atlas MegaMount™ shall be either a wall-mounted or freestanding, floor supported heavy-duty monitor mount, designed to support monitors weighing in excess of 200 lbs. The MegaMount™ design shall be fixed, tilting or articulated. Articulated designs shall be either the “hinged door” (HD) or “extending scissor” (ES) type. Articulated versions offer an extended “service position” allowing up to 24” of gliding service travel, allowing for maintenance access without removing the monitor from the mount.

The Atlas MegaMount™ is recommended for use with Panasonic and Sharp Monitors, the two most prominent mega-monitor manufacturers today. **The MegaMount™ is specifically designed to allow for simplified installation and service of oversized monitors.**



Design & Documentation:

The Atlas MegaMount™ shall be designed completely in CAD and sign-off drawings will be provided to the customer prior to fabrication. A serial number shall be applied to the specified design and the CAD files shall be archived for future reference. Unless otherwise specified, the Atlas MegaMount™ shall ship “knocked-down” to facilitate ease of transport.

Construction:

The MegaMount™ shall be a prefabricated, heavy-duty, powder coated welded steel design. Articulating designs will feature custom billet-milled, precision ball bearing hinges and guides with forged steel axles and spars. As required, the Atlas MegaMount’s construction shall include fixed or removable modesty panels. The MegaMount’s structural framework shall be constructed of precisely welded tubular and plate steel.

Ventilation:

For densely populated designs with high BTU equipment, the Atlas MegaMount may be outfit with optional exhaust fans, to provide for the efficient evacuation of electronic equipment heat. The top and bottom of the MegaMount™ design shall be mostly open to allow for maximum air circulation.

Mounting & Installation:

The Atlas MegaMount™ design shall have detailed installation instructions and contain all necessary hardware, and parts for installing the oversized monitors to the Atlas MegaMount™ structure.

Warranty:

The Atlas MegaMount™ Factory Warranty shall cover all parts and labor for **TEN** full years from invoice date against defects in manufacturing. The manufacturer reserves the right to repair or replace the item in question to satisfy the customer.

CUSTOM DISPLAY SOLUTIONS, INC.

2926 West Pendleton Avenue, Santa Ana, CA 92704 Phone: (800) 650-8845 / Int'l: (714) 540-5220 / Fax: (714) 540-5221

www.cds4av.com